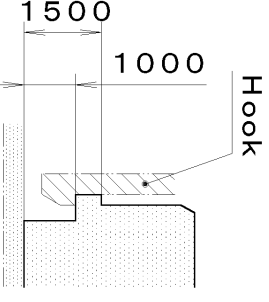
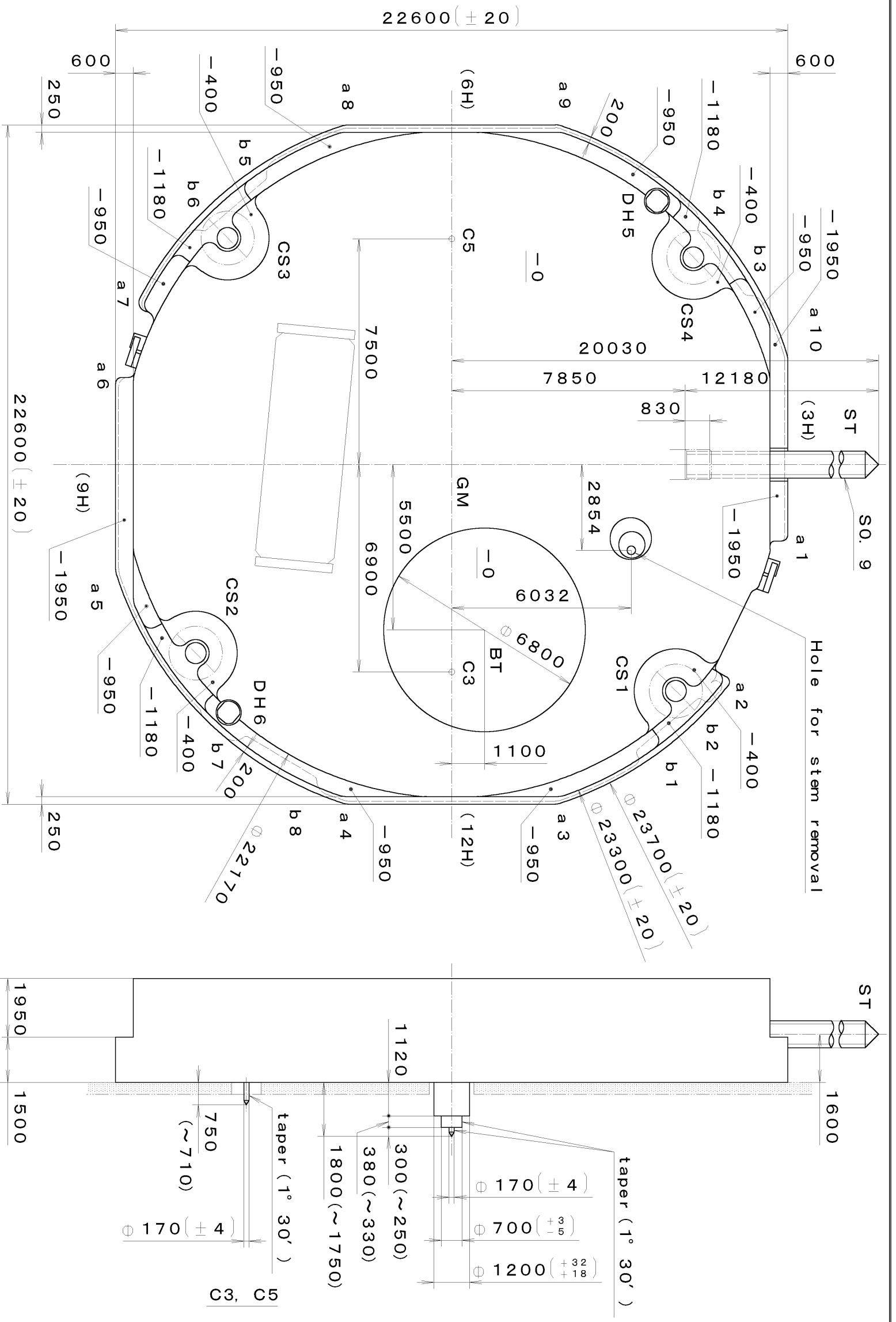


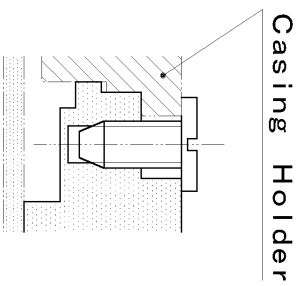
DH5~DH6=22287 (±20)

Coordinates

Mark	X	Y	R
GM	0	0	—
DH5	-8759	6900	—
DH6	8251	-7500	—
a 1	2351	11100	200
a 2	7235	9131	200
a 3	10800	3490	500
a 4	10800	-3490	500
a 5	3490	-10800	500
a 6	-2700	-11100	200
a 7	-5389	-10216	300
a 8	-10800	-3490	500
a 9	-10800	3490	500
a 10	-3490	10800	500
b 1	9581	6360	150
b 2	7928	8331	150
b 3	-5773	9946	150
b 4	-7839	8415	150
b 5	-9572	-6374	150
b 6	-7916	-8342	150
b 7	9196	-6906	150
b 8	10501	-4690	150



Section b1~b8



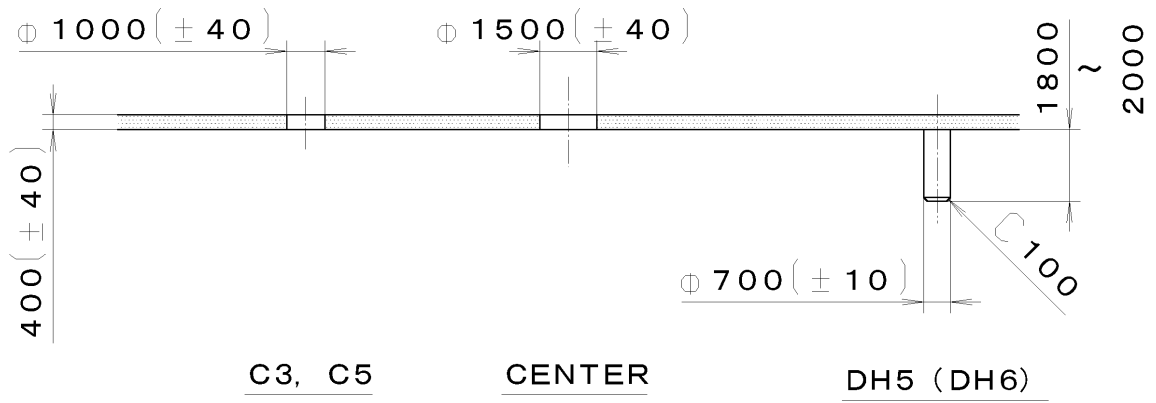
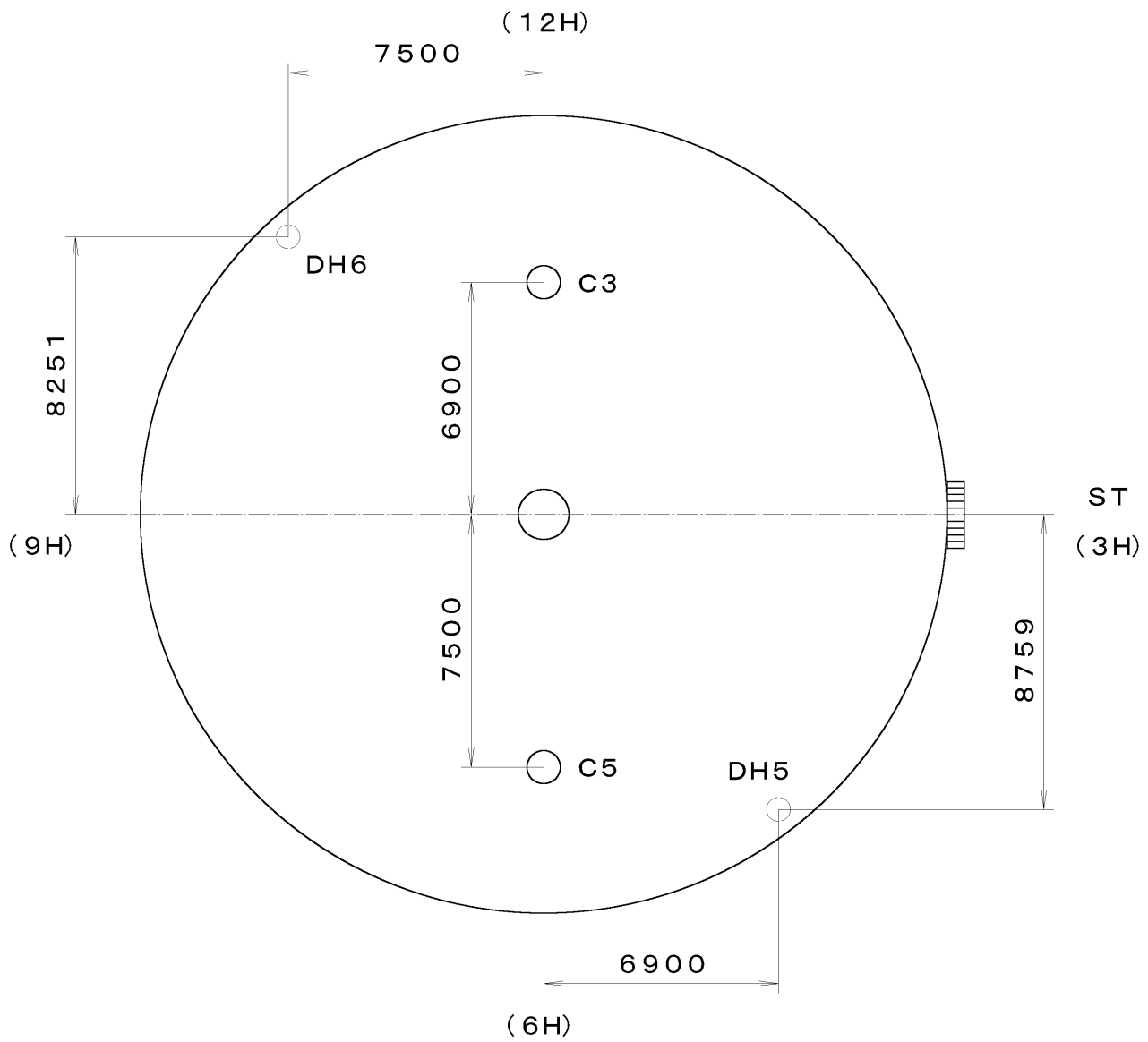
Section CS1~4

	H
With Battery strap	3600
Without Battery strap	3450

Quantity	Unit	Cal. No. :
1	1/1000 mm	6P23
Scale	7:1	Parts:
Date		Drawn
Checked	T. Hiruta	Checked
Approved		Approved
Material		Name: Frame for Case
Heat Treatment		Drawing No.: 6P23C000
Hardness		General Tolerances
Plating		
Dimensions		MIYOTA
Angles		

This drawing is provisional and subject to our reconfirmation and/or revision without notice.

*** T I P W 6P23-00A (01) *** (2100 1121) 02-10-16



7		Quantity	Cal. No. : 6P23-00A
6		Unit 1/1000 mm	Parts:
5		Scale 5:1	
4		Date	Name: Indications for Dial
3		Drawn	
2		Checked T. Hiruta	Drawing No. : 6P23D000
1		Approved	
Material		General Tolerances	MIYOTA
Heat Treatment			
Hardness		Angles	
Plating			